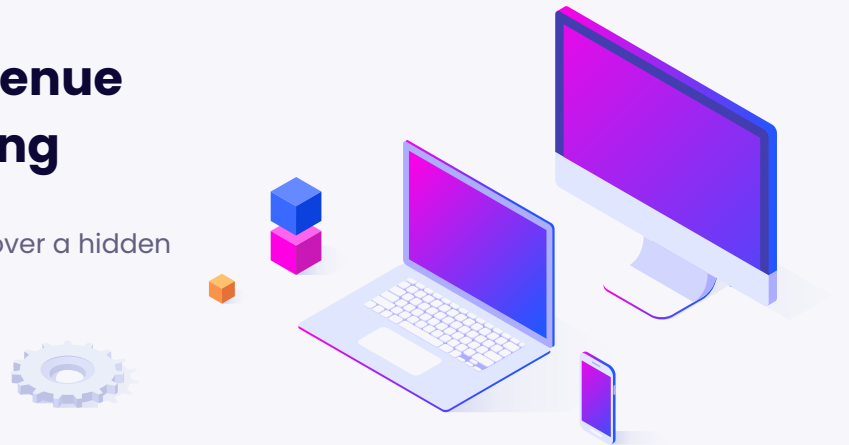


# Unlock a Recurring Revenue Stream With IPv4 Leasing

Monetize unused IPv4 addresses and discover a hidden profit potential.

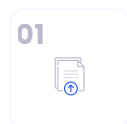


IPXO is the first fully automated IP address management, lease and monetization platform in the market that enables IP holders with unused resources to monetize them via lease. IPXO connects IP holders with vetted IP lessees to ensure that companies with a surplus of IP addresses can profit and companies that cannot scale due to IPv4 scarcity can grow. Together, we can build a sustainable and open internet.

## Key Features

- All RIR IPs supported
- 75+ industries
- Quick & easy sign-up
- Monthly payouts
- Full technical management
- Advanced customer KYC
- Financial reports
- IP price control
- Advanced route disruption system
- LOA & ROA management
- IRR record management
- Managed LIR services
- Instant provisioning
- IP reputation monitoring
- Abuse report mitigation
- 24/7 helpdesk
- Geolocation services

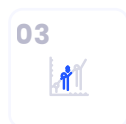
## IP Holder



01  
Import and Authorize Subnets



02  
Customize Subnet Preferences

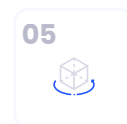


03  
Set your Subnet Pricing

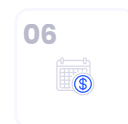
~ 5 min Setup



04  
Lease the Subnets



05  
360 Management



06  
Monthly Payouts

IPXO

“IP monetization turned into a great revenue stream. IPXO has been a great partner for us and really helped us work through all issues, understand everything and monetize our IPs.”

- Dan Handy, Ace Data Centers

## About IPXO

- 10+ years of experience in the industry
- 75+ industries and thousands of customers served worldwide
- Built to create a sustainable Internet Protocol sharing and management ecosystem
- Professional abuse and IP reputation monitoring



## How to get started with IPXO

Step 1: Register with IPXO.

Step 2: Import your subnets.

Step 3: Set up the subnets' split sizes, expiration dates, auto-renewal and prices.

Step 4: [Set a payout method](#) and start [monetizing your resources](#).

To learn [How To Prepare Your Subnet for the IPXO Marketplace](#) before importing it, use our Knowledge Base guide.

[Register Now](#)

### LEARN MORE

**About us:** <https://www.ipxo.com/about-us/>

**IPv4 leasing:** <https://www.ipxo.com/lease-ips/>

**Knowledge Base:** <https://www.ipxo.com/kb/>

**CONTACT US** [contact@ipxo.com](mailto:contact@ipxo.com)

